

Origin licence renewal instructions - August 2019

The University of Oxford has a site license for Origin software. The software is widely used in the Chemistry, Physics and Materials departments. The university site license has been extended for a further 3 years until 4th August 2022.

Managed desktops typically have Origin software installed so as to obtain licenses from the local license servers which have been updated already (port 6160 on lic1.chem.ox.ac.uk or port 6160 on flexlm.nsms.ox.ac.uk). There is no need for any change to the desktop installations unless upgrading to a newer version of Origin.

Laptops and other personal systems have Origin installed by users as per instructions at <http://www.chem.ox.ac.uk/origin> so as to obtain roaming licenses directly from the OriginLab website.

Each laptop and personal system will need the Origin license to be updated as per the instructions below.

If you have origin2017 or higher:

- If there is a newer version available for upgrade (**on 1st August 2019 the newest version is 2019b**)
 - Download the newest trial version from <https://www.originlab.com/index.aspx?go=DOWNLOADS>
 - Install the newest trial version on the computer on which current Origin is activated
 - Start Origin. The license process will then be done in background automatically. If successful, you will get a success message. If failed, a Notepad window opens with instruction. Follow the instruction to activate Origin manually.
- If there is no newer version available
 - Start Origin. Select Help: Activate License.
 - In the License Activation dialog, the product key is pre-filled. Click the Activate button. If successful, you will get a success message. If failed, a Notepad window opens with instruction. Follow the instruction to activate Origin manually.

If you have Origin 2016 or lower:

- Log into your computer with an account with administrator permissions.
- Start Origin as an administrator by RIGHT-clicking the Origin icon and selecting Run as Administrator.
- Select Help>About Origin.
- In the About Origin dialog, click the License button.
- In the License Status dialog, click the License button.
- Then in the main licensing dialog, proceed to "Get a license online now"
you now need to get from the OriginLab website which has opened automatically
- Login to the OriginLab website. You should already have an account (since you have been using origin already) therefore enter your username and password (or select email forgotten password). If necessary you could also create a new account, making sure you use your oxford email address.
- After login, the webpage opened by the origin software will show your license file which you need to copy and paste into the origin application license textbox (within 15 minutes).

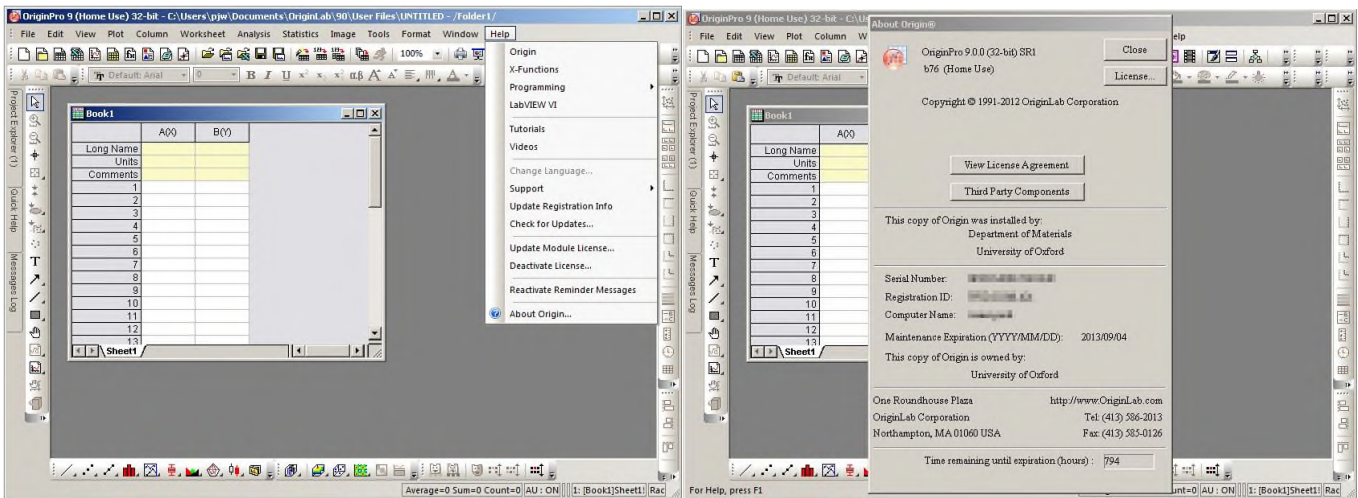
After the activation process is completed, select Help>About Origin to confirm the updated maintenance expiration date is correct (4/8/2022)

Origin should now be successfully licensed again and you can continue working.

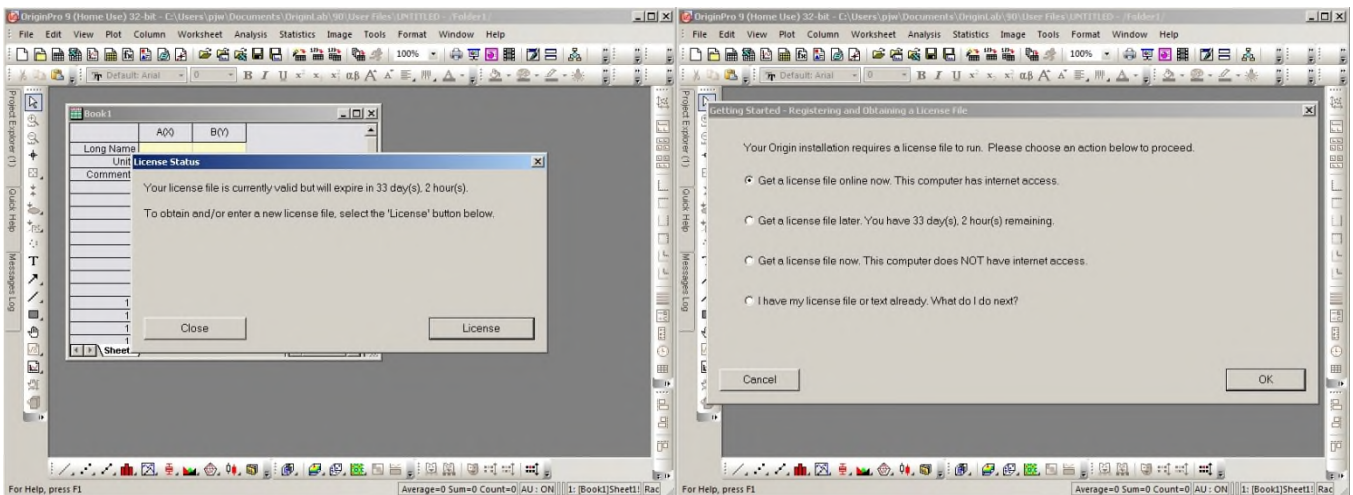
Any queries should be sent to your Origin administrator within each department. E.g. itsupport@materials.ox.ac.uk

Upgrade instructions from around 2013 for updating Origin (ie. pre-2016 version)

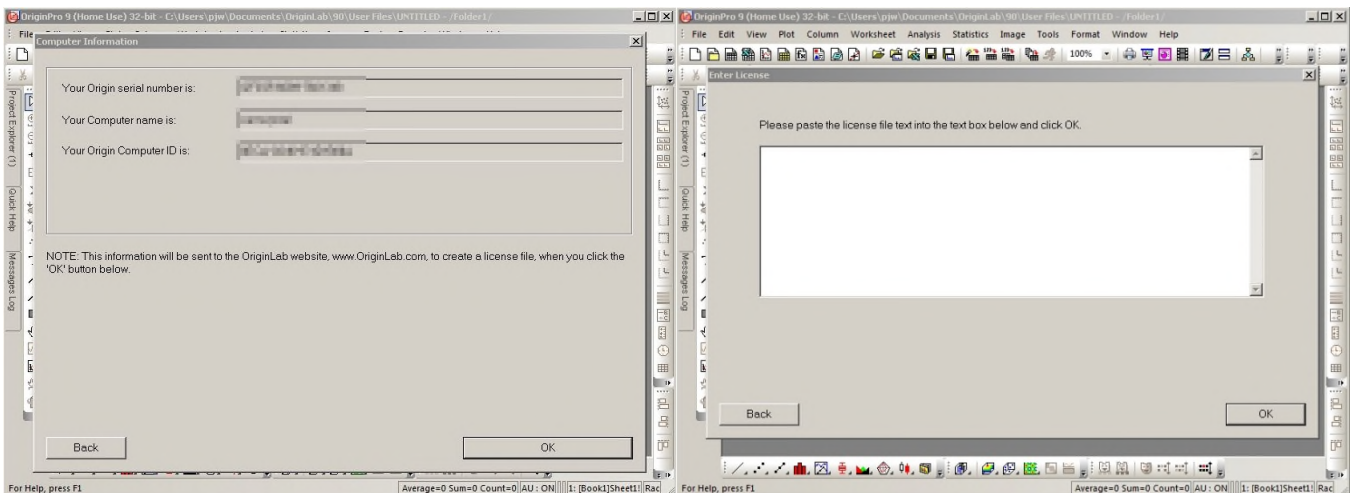
- 1) First open the Origin application by Right-clicking and selecting “Run as Administrator”.
- 2) Then within the application select “Help : About Origin” and in the About Origin window click “License”.



- 3) Check the license status (when will it expire?) then click “License” and select “Get a license online now”.

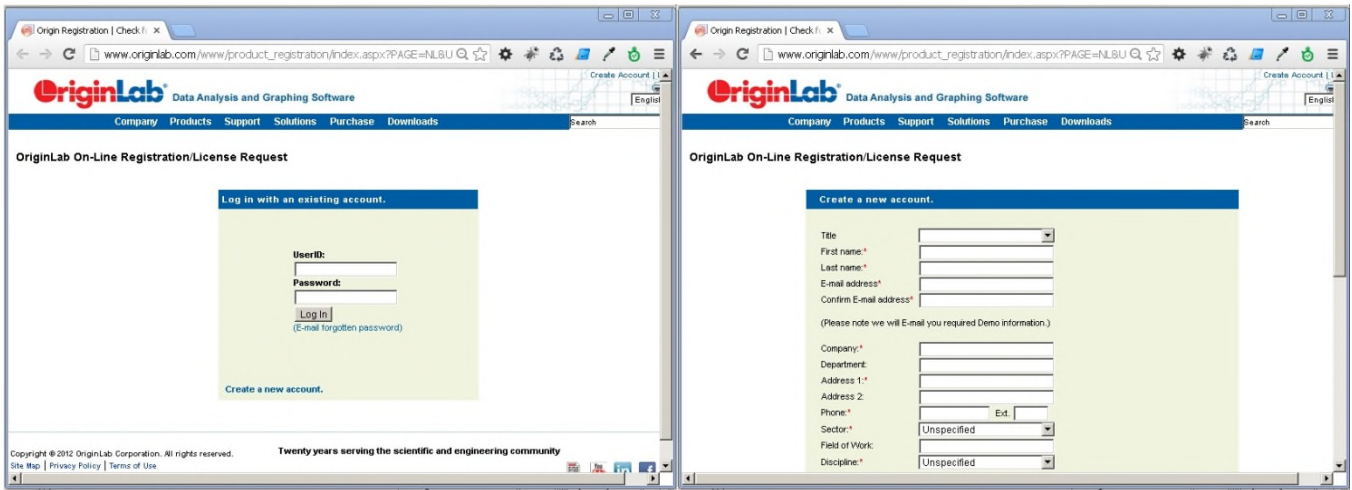


- 4) Review your computer information then click OK. You are presented with a textbox into which to paste your license which you now need to get from the OriginLab website which has opened automatically as below.

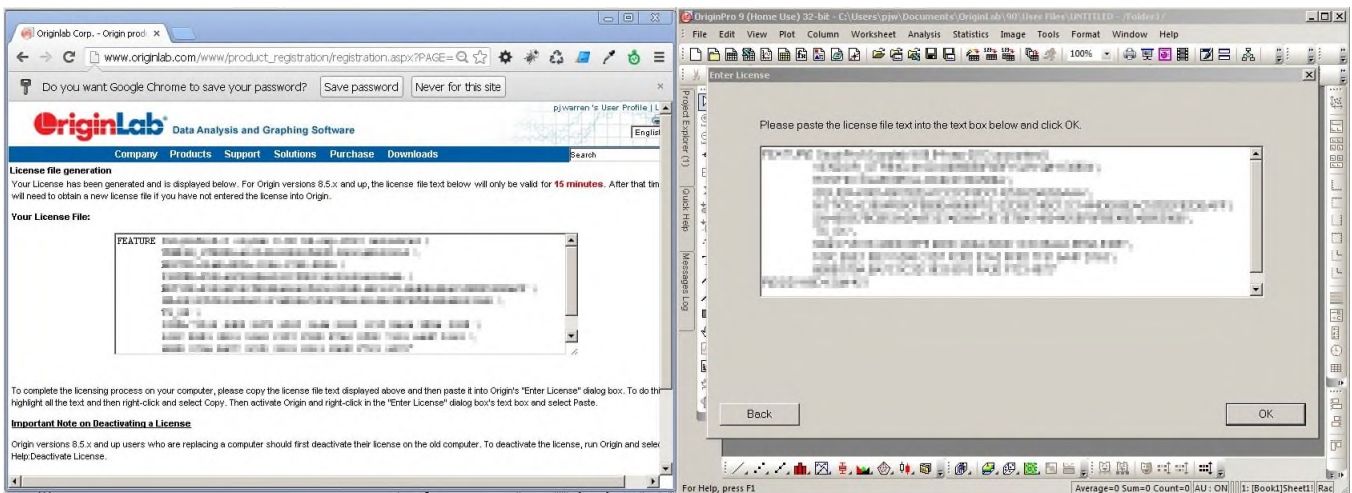


- 5) Meanwhile the OriginLab website opens in your default web-browser and asks you to login. You should already have an account (since you have been using origin already) therefore enter your username and

password (or select email forgotten password). If necessary you could also create a new account, making sure you use your oxford email address.



6) After login, the webpage opened by the origin software will show your license file which you need to copy and paste into the origin application license textbox (within 15 minutes).



Origin should now be successfully licensed again and you can continue working.

Any queries should be sent to your Origin administrator within each department. E.g. itsupport@materials.ox.ac.uk